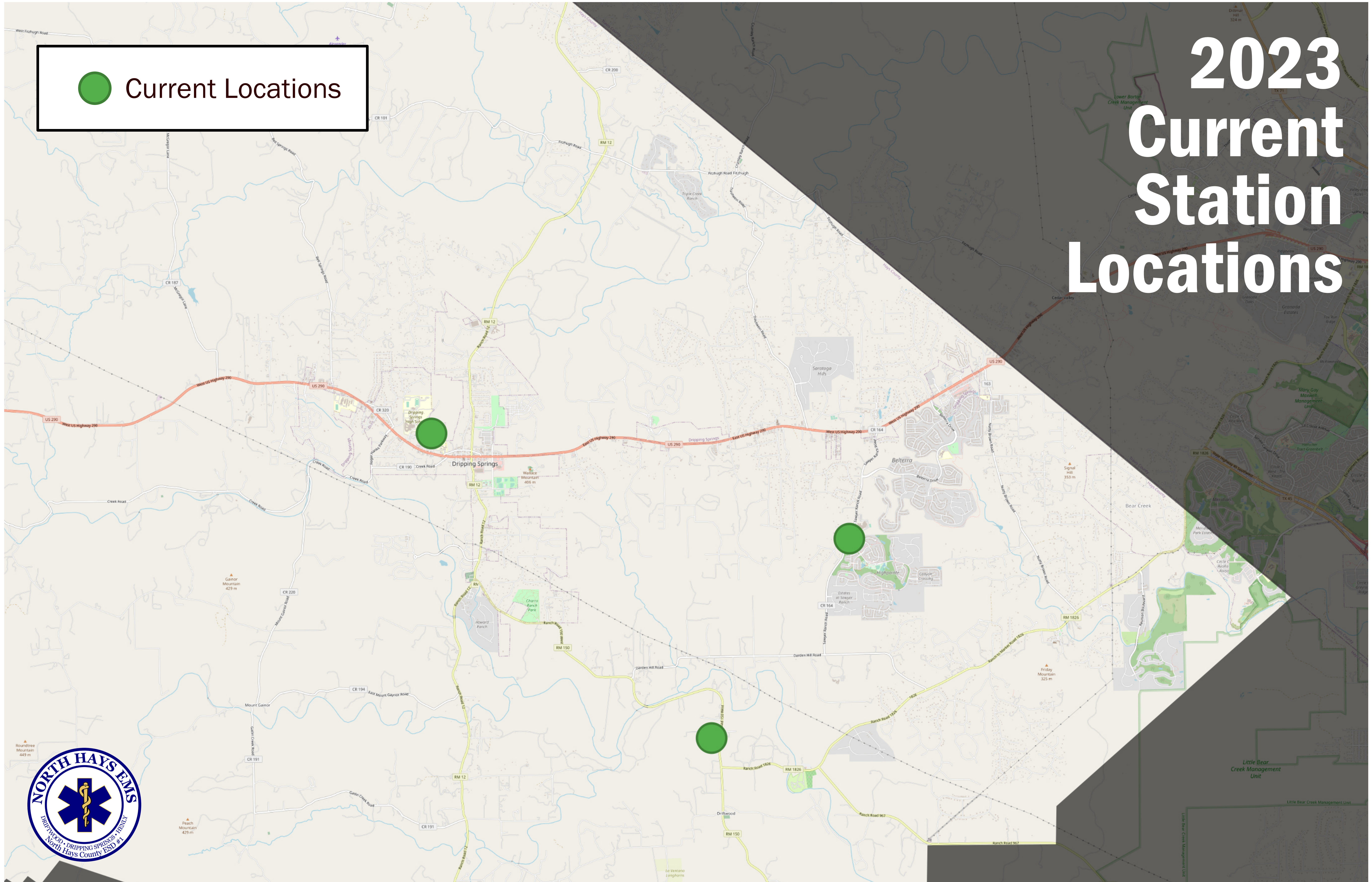




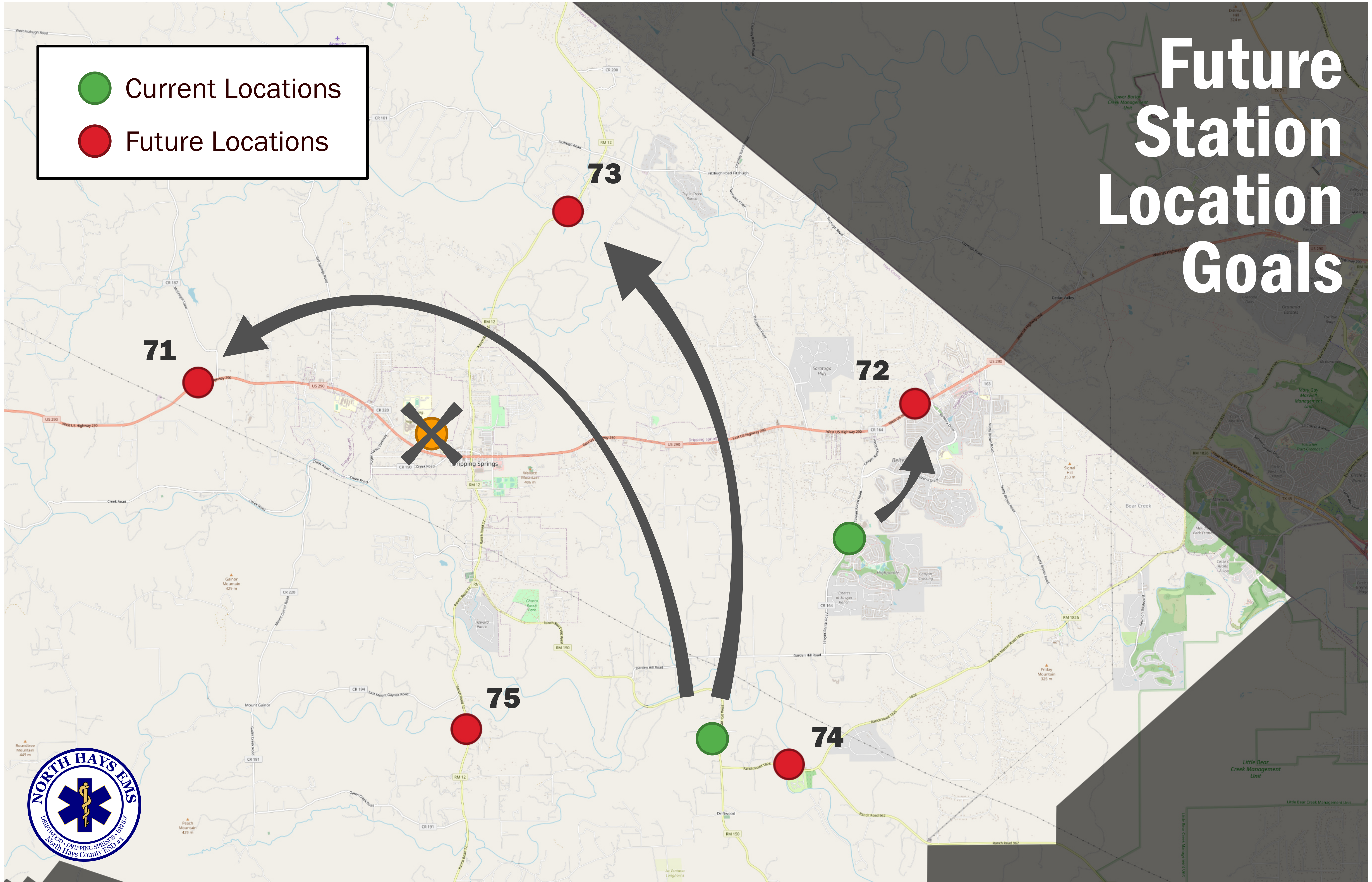
● Current Locations

2023 Current Station Locations



Future Station Location Goals

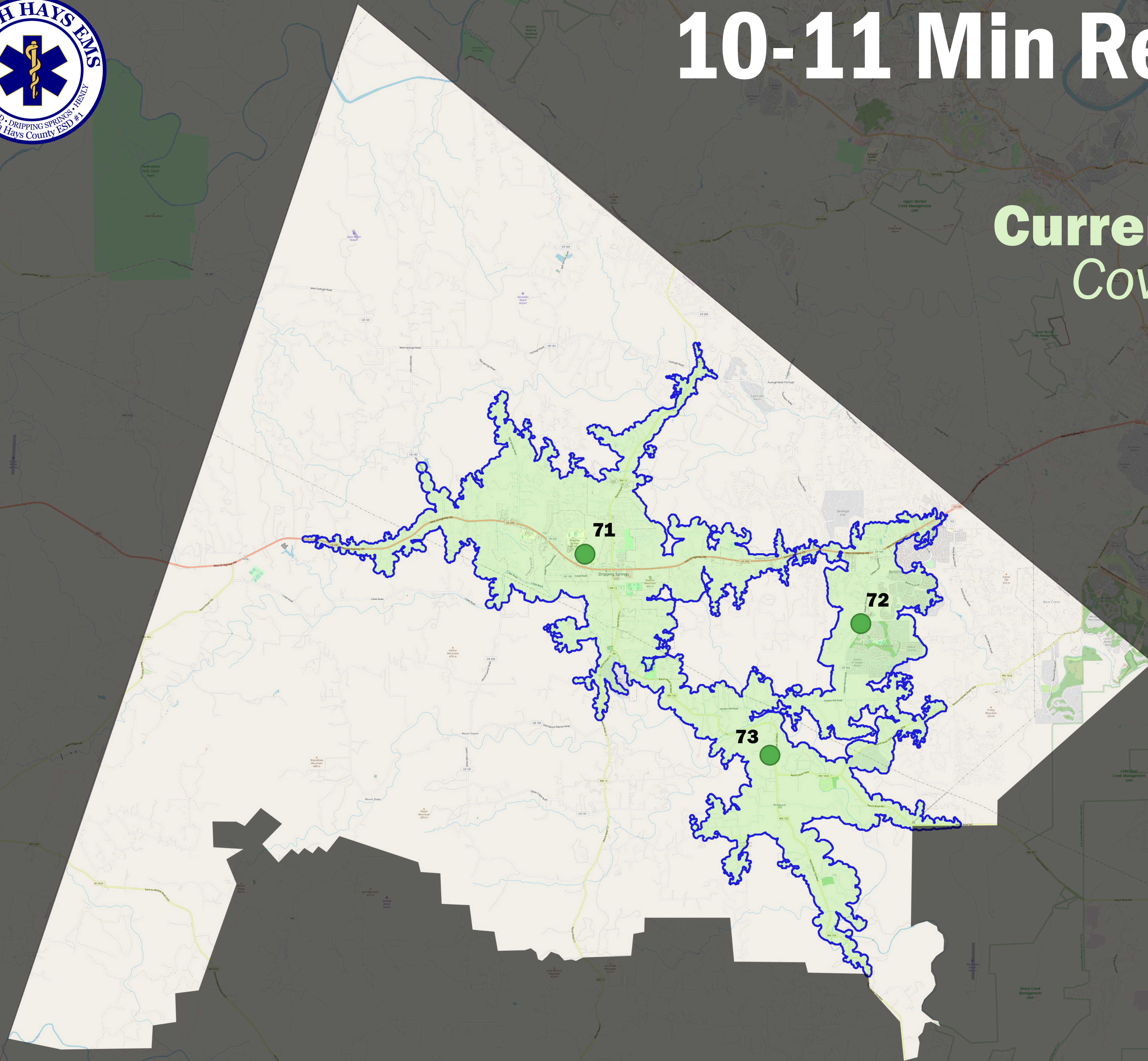
-  Current Locations
-  Future Locations





10-11 Min Response Times from Stations

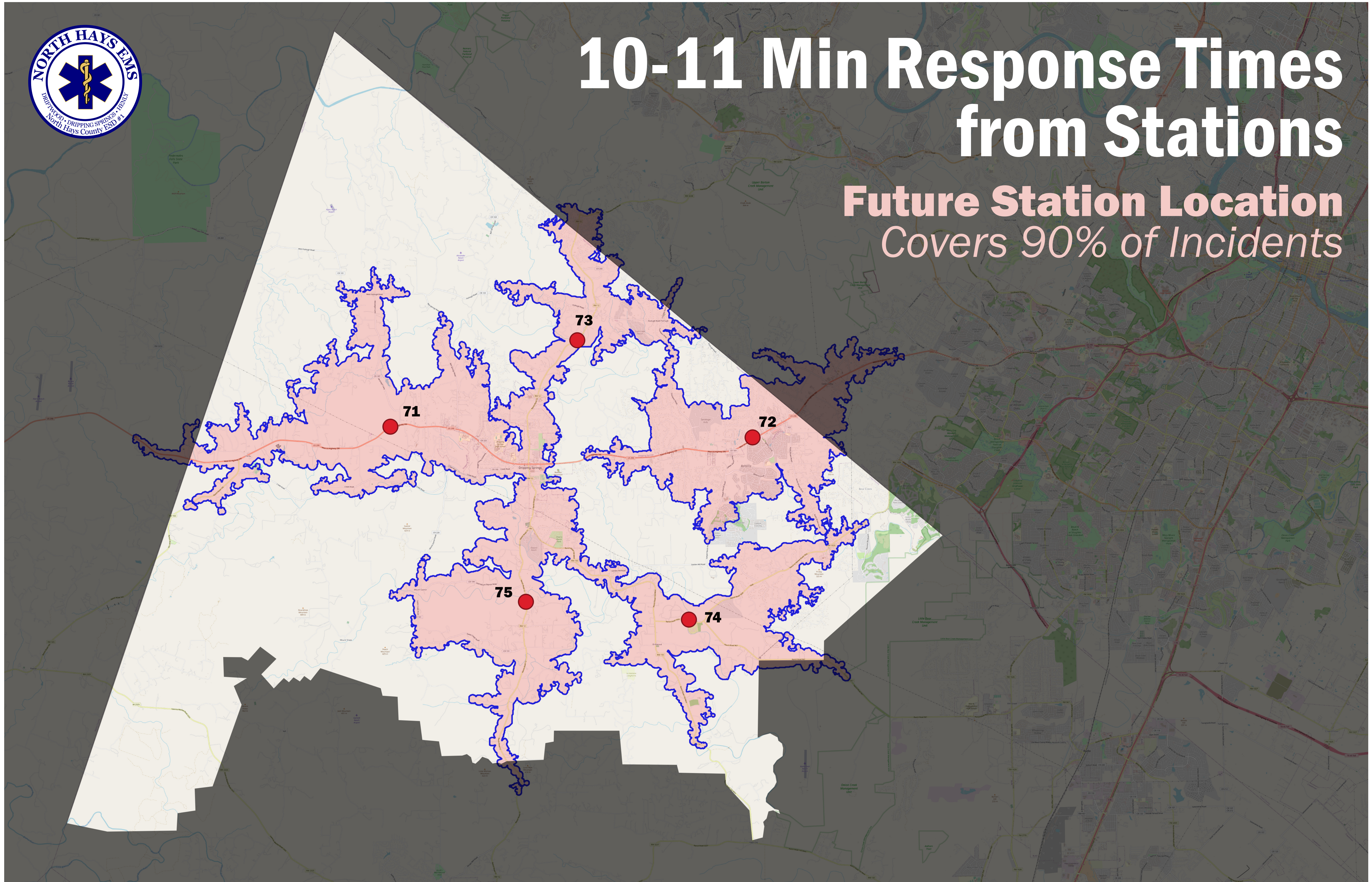
Current Station Location
Covers 65% of Incidents





10-11 Min Response Times from Stations

Future Station Location
Covers 90% of Incidents





EMS TAXING ENTITIES HAYS-TRAVIS-COMAL COUNTIES

DISTRICT	CURRENT TAX RATE
Pedernales EMS (Travis County ESD 16)	\$0.0740/\$100 valuation
Bulverde Spring Branch EMS (Comal County ESD 1)	\$0.0707/\$100 valuation
Buda EMS (Hays County ESD 2)	\$0.0674/\$100 Valuation
Wimberly EMS (Hays County ESD 7)	\$0.0620/\$100 Valuation
Canyon Lake EMS (Comal County ESD 2)	\$0.0616/\$100 Valuation
Austin-Travis County EMS	\$0.0534/\$100 Valuation
Kyle EMS (Hays County ESD 9)	\$0.0505/\$100 Valuation
North Hays EMS (North Hays County ESD 1)	\$0.0300/\$100 Valuation